



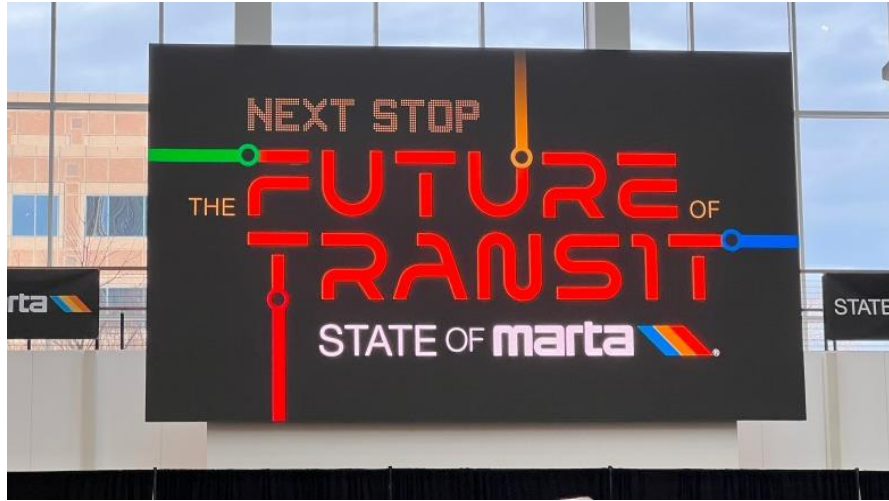
DeKalb County 2025 Q1 Update

February 4, 2025

Carrie Rocha

Chief Capital Officer

THE STATE OF MARTA



Agenda

Operations Updates

**Capital Improvement
Program**

Preliminary Planning

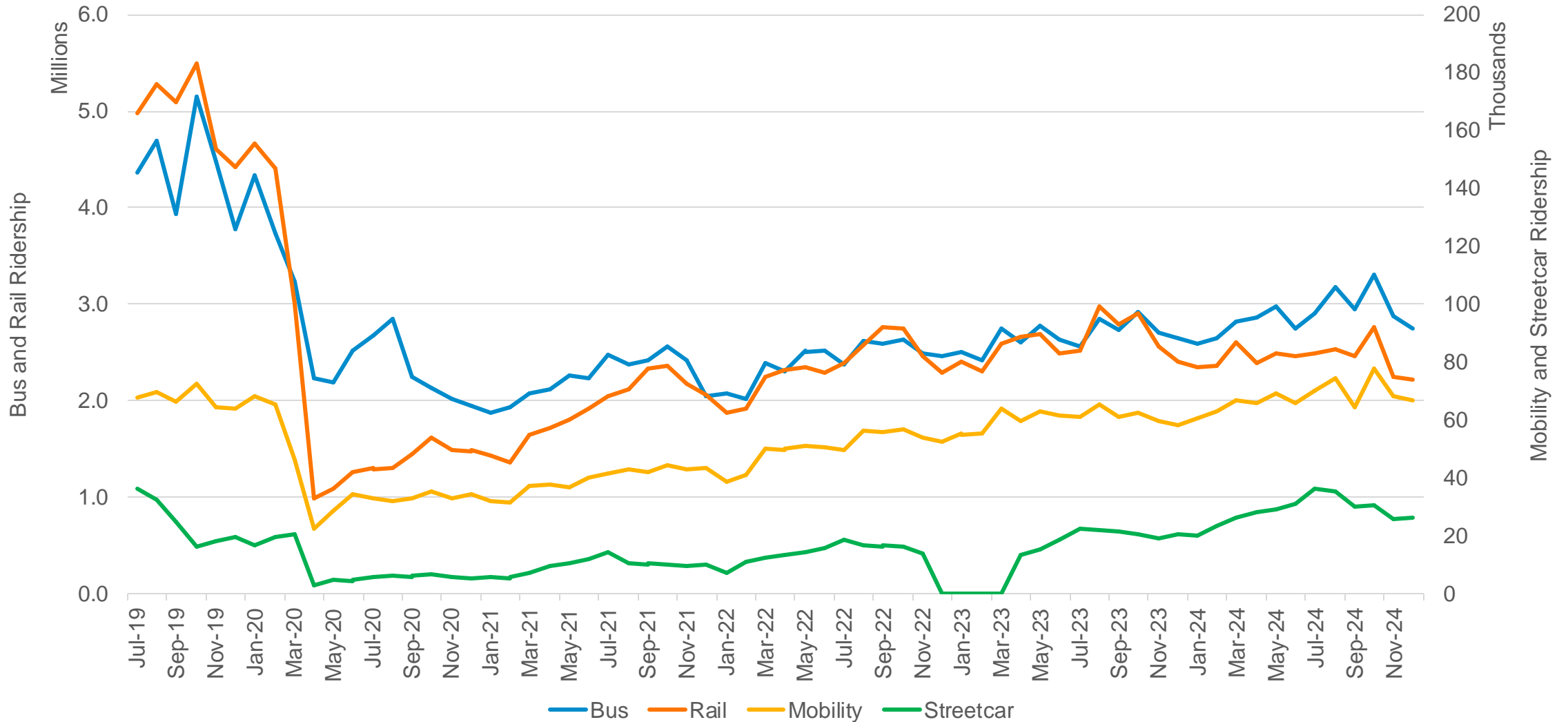
Station Rehab & TOD

Other News



Operations Updates

MARTA Monthly Ridership by Mode July 2019 - December 2024



SAFE ROUTES TO TRANSIT

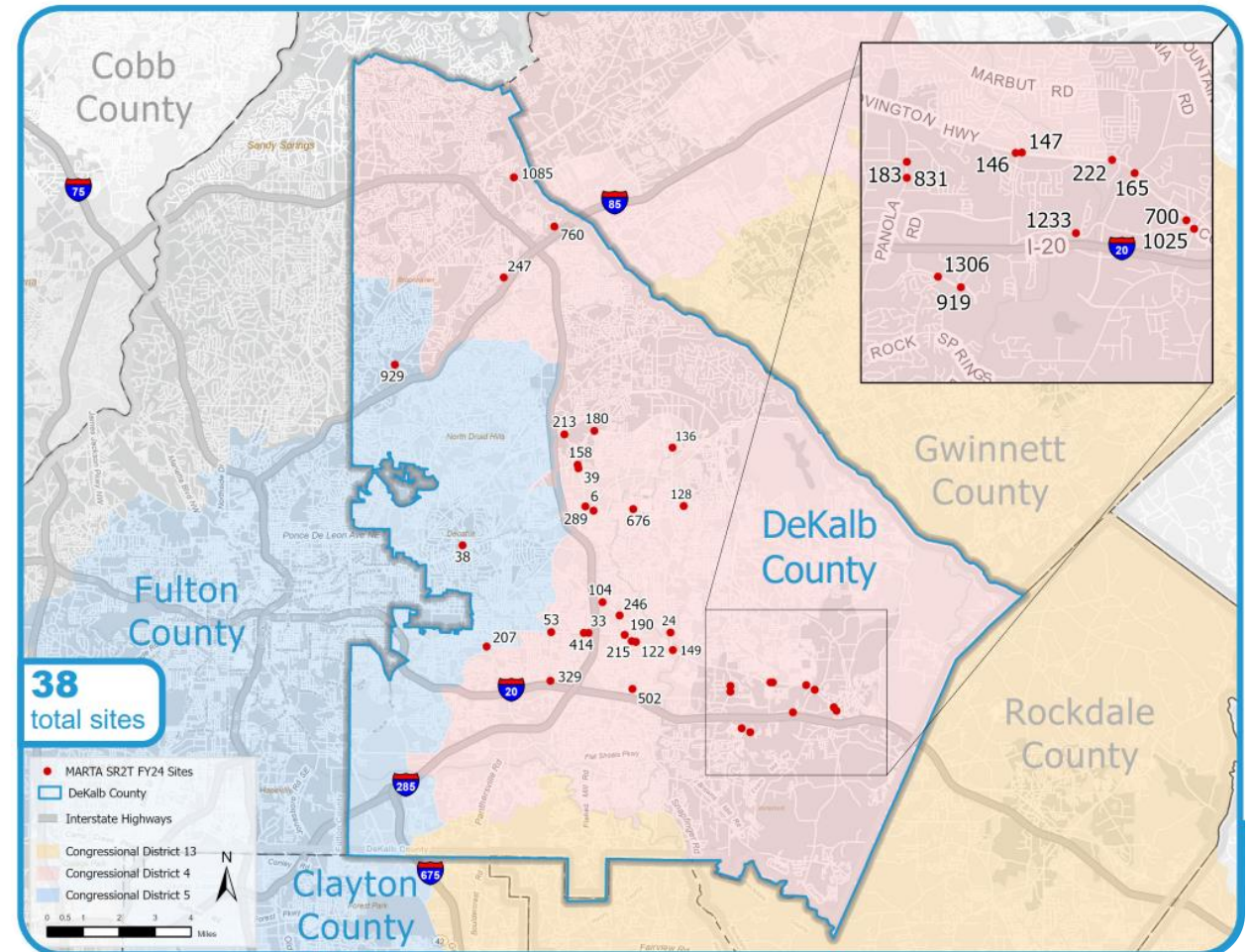


Example of typical treatments the SR2T program will bring to bus stops across the region (Amenities shown were part of the 1,000 Amenities program completed in the summer of 2024).

- ✓ This program presently in planning improves pedestrian conditions near high ridership bus stops. Typical treatments include but are not limited to:
 - High visibility crosswalks
 - Curb extensions
 - Medians and refuge islands
 - Rapid-flash & pedestrian beacons

SAFE ROUTES TO TRANSIT

- ✓ The SR2T program is funded for 2 cycles across our service area.
- ✓ 2024: DeKalb County and MARTA selected and designed 38 sites for Phase I
- ✓ December 2024: DeKalb and MARTA kicked-off the 2nd cycle of the program selecting and designing sites.
- ✓ 2025: MARTA will initiate the procurement process to select design-build vendor.

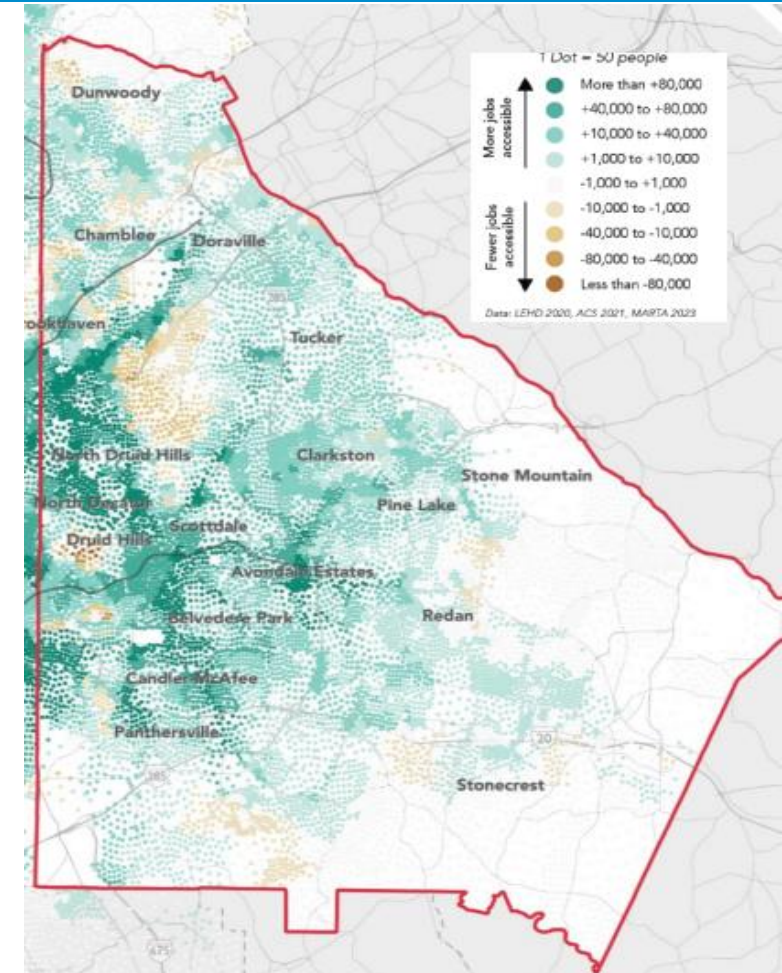


NEED & GOALS

- ✓ First 360-degree reconfiguration
- ✓ Connecting **more people** to **more destinations** in **less time**
- ✓ Simpler routes + fewer transfers
- ✓ Shift towards **ridership** vs. **coverage** model
- ✓ On demand service

OUTCOMES

- ✓ Access to 21% more jobs in 60 minutes or less
- ✓ Frequent service to an additional 105K people and 103K jobs
- ✓ 19% more colleges/ universities, 25% more grocery stores, 26% more hospitals accessible by transit



Coverage

The Ridership-Coverage Balance

Ridership

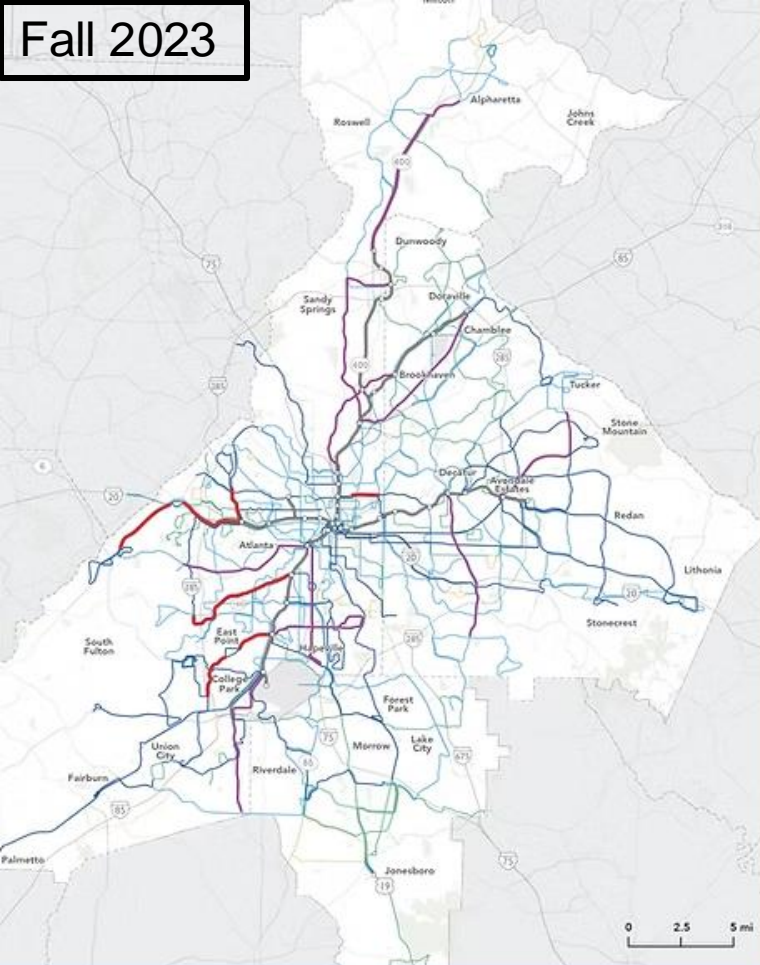
Current Network

60% ridership, 40% coverage

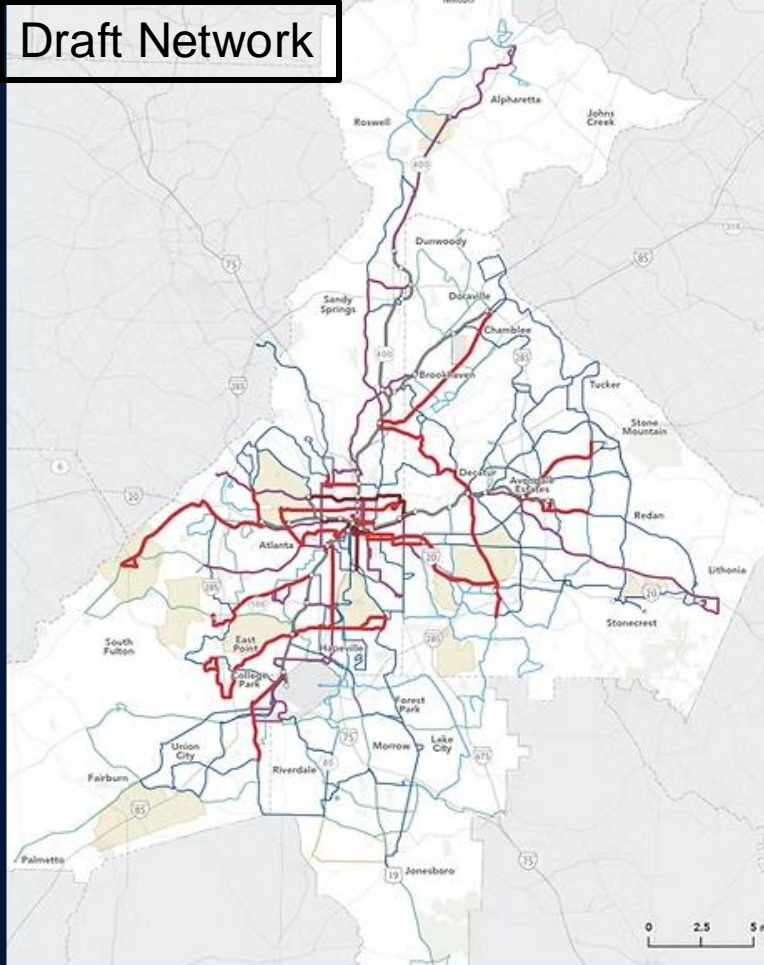
Draft Network Target

75% ridership, 25% coverage

Fall 2023



Draft Network



Dark Red lines arrive every 10-12 minutes or less
Red lines arrive every 15 minutes
Purple lines arrive every 20 minutes
Dark Blue lines arrive every 30 minutes

Light blue lines arrive every 40-45 minutes
Green lines arrive every 60 minutes
Tan Zones are on-demand service areas

STEPS TOWARDS IMPLEMENTATION

- ✓ Stakeholder briefings: 2024-Jan. 2025
- ✓ Public engagement: Winter – Spring 2025
 - Revisions
- ✓ PCP Board Committee target: Spring/Summer 2025
- ✓ MARTA Board approval
- ✓ Rider education + operator training
- ✓ **Implementation target: Q4 2025**



Capital Improvement Program

BUFORD HIGHWAY ART

BACKGROUND

- ✓ Locally funded
- ✓ Memorialized in the 15th Amendment
- ✓ Highest ridership corridor

STEPS TO CONSTRUCTION

- ✓ 30% design complete
- ✓ Final design consultant solicitation – Feb. 2025
- ✓ Final Design – Approx. 18 to 24 months
- ✓ Construction procurement – 6 months
- ✓ Construction – Estimated to start in 2027

GOALS

- ✓ Projected annual ridership: 1,859,400
- ✓ Investment: \$52M



CANDLER ROAD ART

BACKGROUND

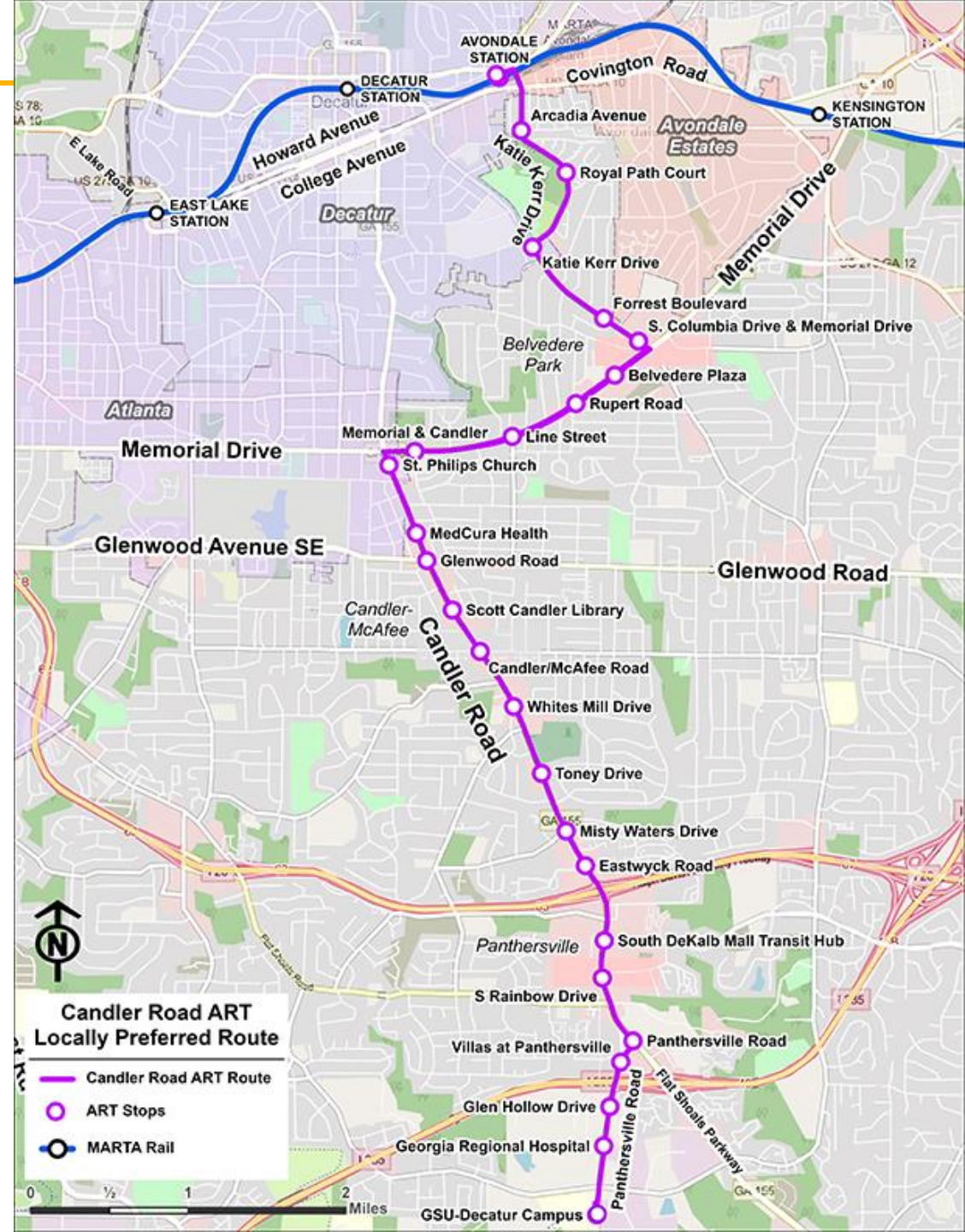
- ✓ Identified in the DeKalb Transit Master Plan
- ✓ Locally funded
- ✓ Memorialized in the 15th Amendment

STEPS TO CONSTRUCTION

- ✓ 30% design complete
- ✓ In-process of procuring final designer
- ✓ Final design – Approx. 18 to 24 months
- ✓ Construction procurement – Approx. 6 months
- ✓ Construction – Estimated to start in 2027

GOALS

- ✓ Projected annual ridership: 784,500
- ✓ Investment: \$54M



SOUTH DEKALB & STONECREST TRANSIT HUB

DESIGN PROCESS

- ✓ 30% design complete
- ✓ Finalizing final design consultant solicitation
- ✓ Environmental clearance
- ✓ Awarded FTA Categorical Exclusion



South DeKalb Transit Hub Rendering

- ✓ **Investment:** \$37M
- ✓ **Projected Opening:** 2027

NEXT STEPS

- ✓ Final design
- ✓ Real estate acquisition
- ✓ Construction



Stonecrest Transit Hub Rendering

- ✓ **Investment:** \$27M
- ✓ **Projected Opening:** 2028



Preliminary Planning

I-285 EXPRESS LANE TRANSIT

BACKGROUND

- ✓ BRT on I-285 identified in DeKalb Transit Master Plan (TMP)
- ✓ Leverages GDOT's P3 top-end express lane plan to expand transit options

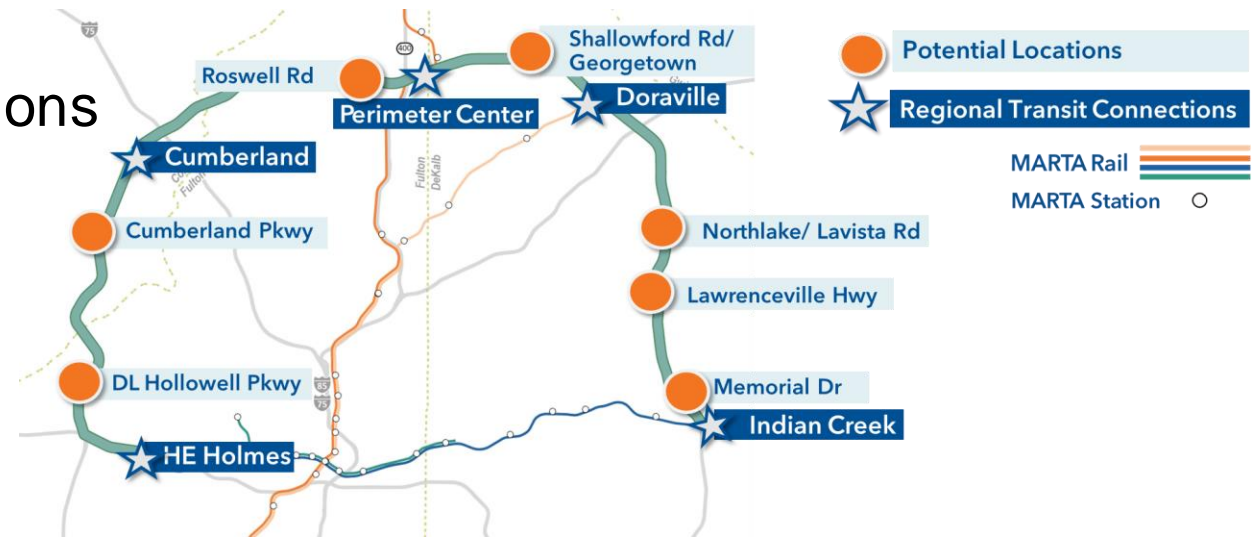
PLANNING STATUS

- ✓ Developing station concepts based on transportation patterns and existing conditions
- ✓ Final report targeted for Summer 2025

COMMUNITY ENGAGEMENT

- ✓ December 2024 public meetings
- ✓ Technical Working Group: 2/6
- ✓ Policy Working Group: 2/7
- ✓ Ongoing stakeholder engagement

I-285 EXPRESS LANES TRANSIT



CLIFTON CORRIDOR BUS RAPID TRANSIT (BRT)

BACKGROUND

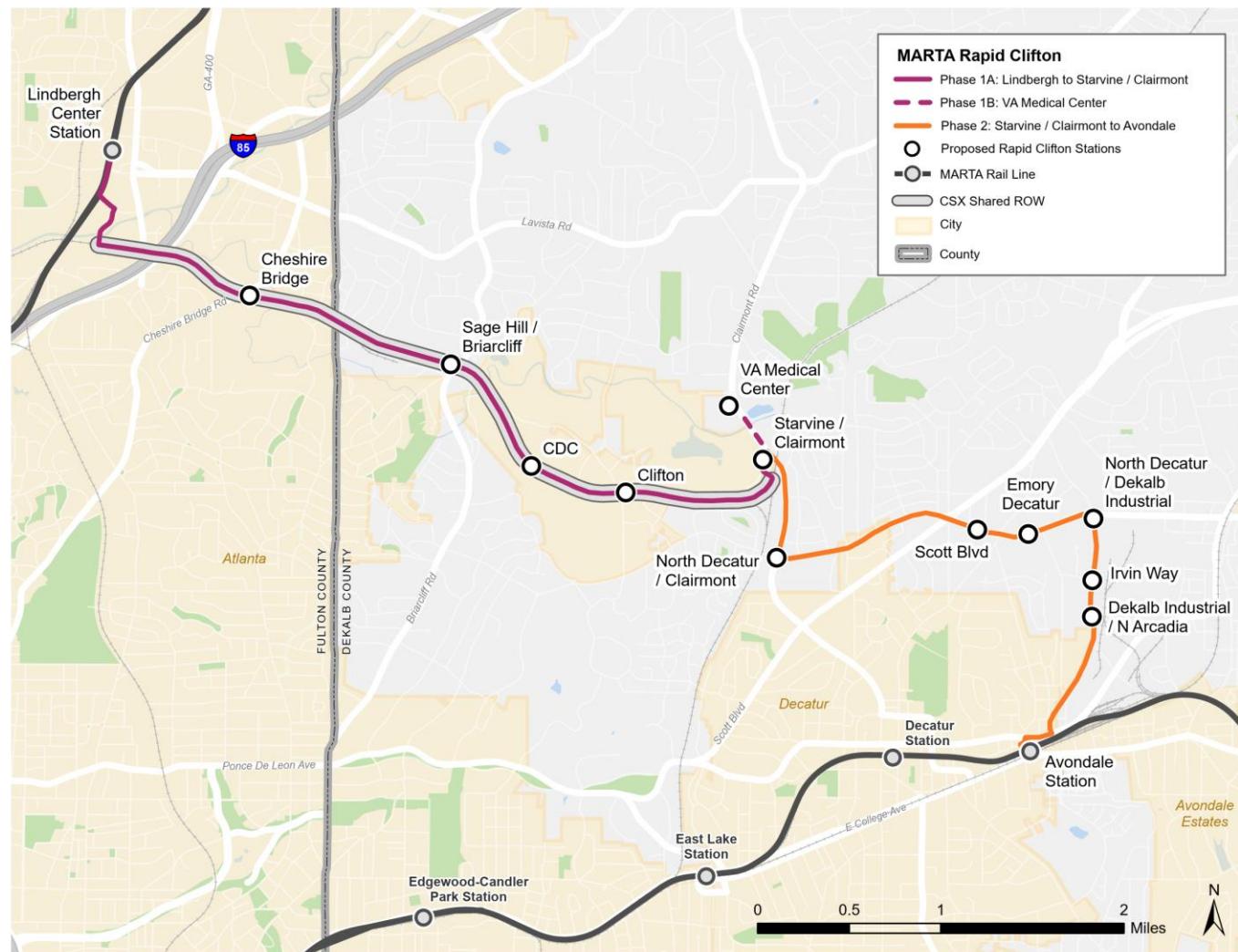
- ✓ Lindbergh to VA Medical Center/ Emory funded under CoA More MARTA
- ✓ Unfunded in unincorporated DeKalb

PLANNING STATUS

- ✓ 15% design plans complete
- ✓ Ongoing environmental work outside of CSX corridor
- ✓ LPA target: Q2 2025

PUBLIC ENGAGEMENT

- ✓ Preparing LPA focused meetings:
 - Key stakeholder meetings (CSX, Emory, VA Medical Center, CDC)
 - TAC meeting
 - Public meeting



SOUTH DEKALB TRANSIT INITIATIVE

BACKGROUND

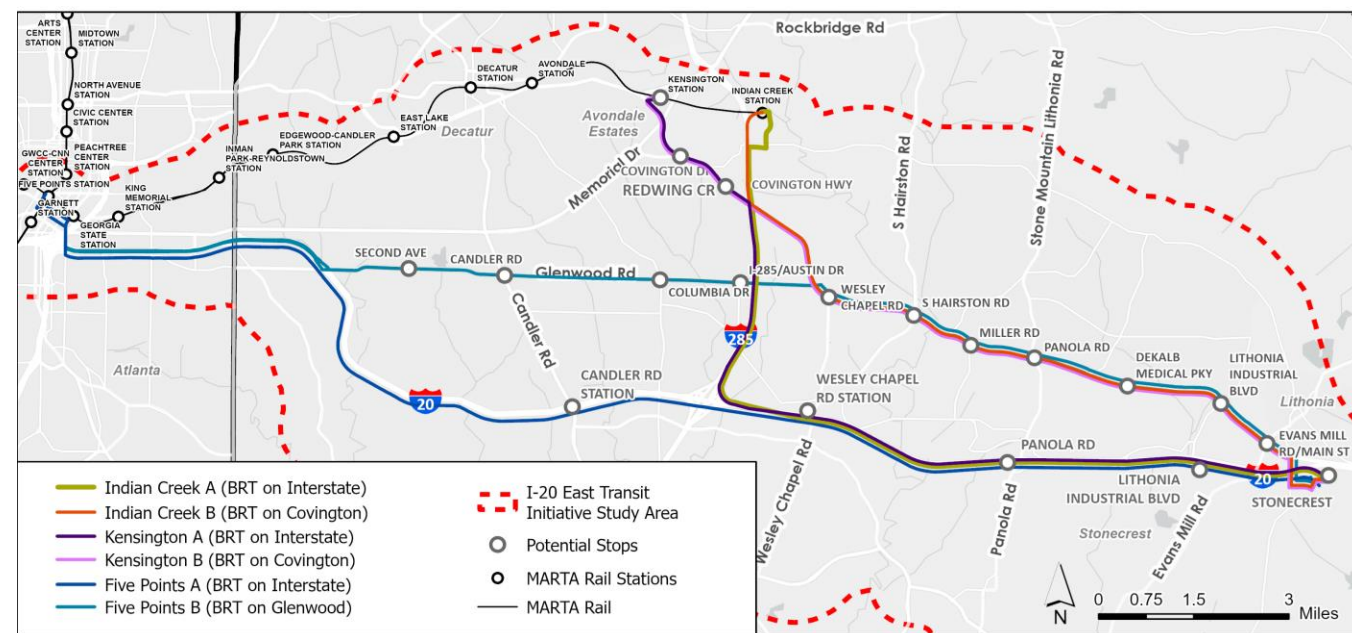
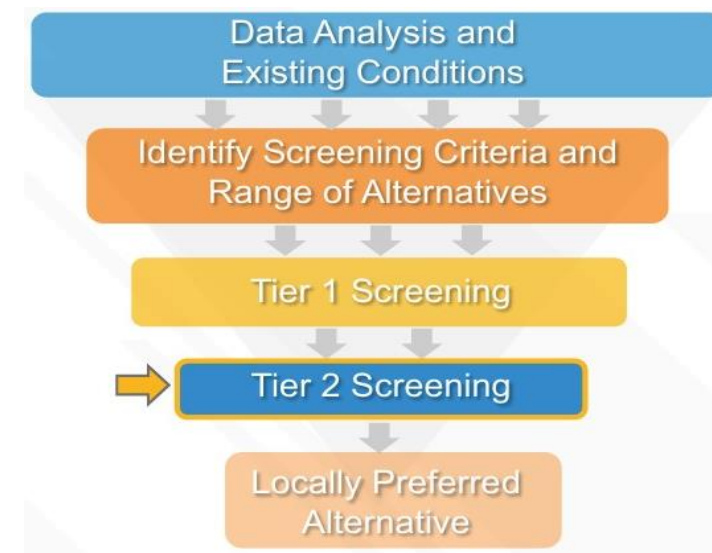
- ✓ BRT from Indian Creek to Stonecrest in TMP
- ✓ 2019 South DeKalb TOD study
- ✓ Modes examined: Bus Rapid Transit (BRT), Light Rail Transit (LRT), Heavy Rail Transit
- ✓ Termini examined: Five Points, Kensington, Indian Creek

PLANNING STATUS

- ✓ Narrowed from 10 to 6 BRT alternatives
- ✓ Examined alternatives using CIG criteria
- ✓ Finalizing report for Locally Preferred Alternative (LPA) recommendation

ENGAGEMENT

- ✓ Spring 2025 LPA focused public meetings



ART TO BRT FEASIBILITY STUDY

BACKGROUND

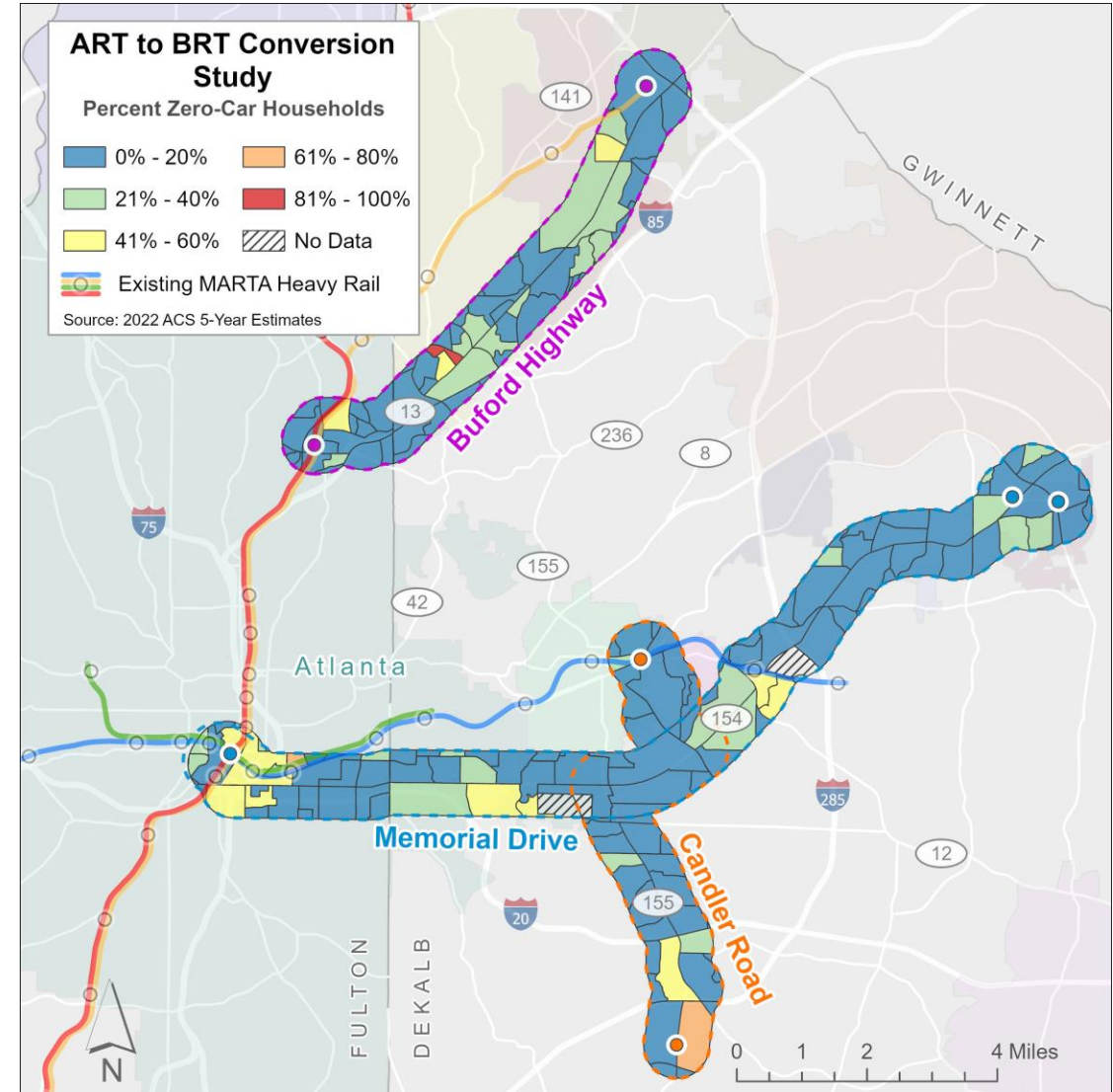
- ✓ BRT on Buford Highway identified in TMP
- ✓ Transit on Memorial Drive and Candler Road identified in TMP
- ✓ Analyzed feasibility of BRT along Buford Highway, Candler Road, and Memorial Drive

PLANNING STATUS

- ✓ Report finalized
- ✓ Estimated benefits including service attractiveness
- ✓ Estimated cost and timeline impacts

BRIEFINGS

- ✓ December 2024: DeKalb Planning & Public Works
- ✓ January 2025: MARTA PCP
- ✓ February 18: DeKalb PWI





Station Rehab & TOD

TRANSIT ORIENTED DEVELOPMENT

COMPLETE

- ✓ Edgewood-Candler Park
- ✓ Avondale Station
- ✓ Chamblee Station



Avondale Mixed Use Development

UNDER DEVELOPMENT

- ✓ Brookhaven City Hall
- ✓ Avondale Phase III
- ✓ Kensington Station



Kensington Station TOD Construction

TRANSIT ORIENTED DEVELOPMENT MASTER PLANNING



Indian Creek TOD Artistic Concept Rendering



Kensington TOD Artistic Concept Rendering

INDIAN CREEK STATION REHAB



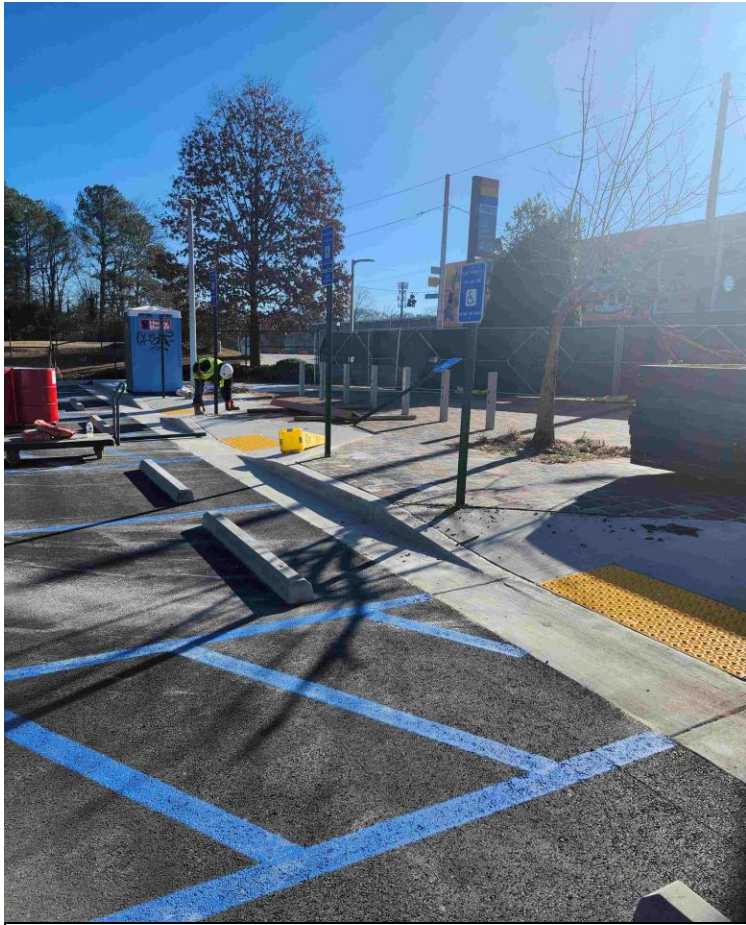
Image: MARTA

Bridge construction connecting to Durham Park Road





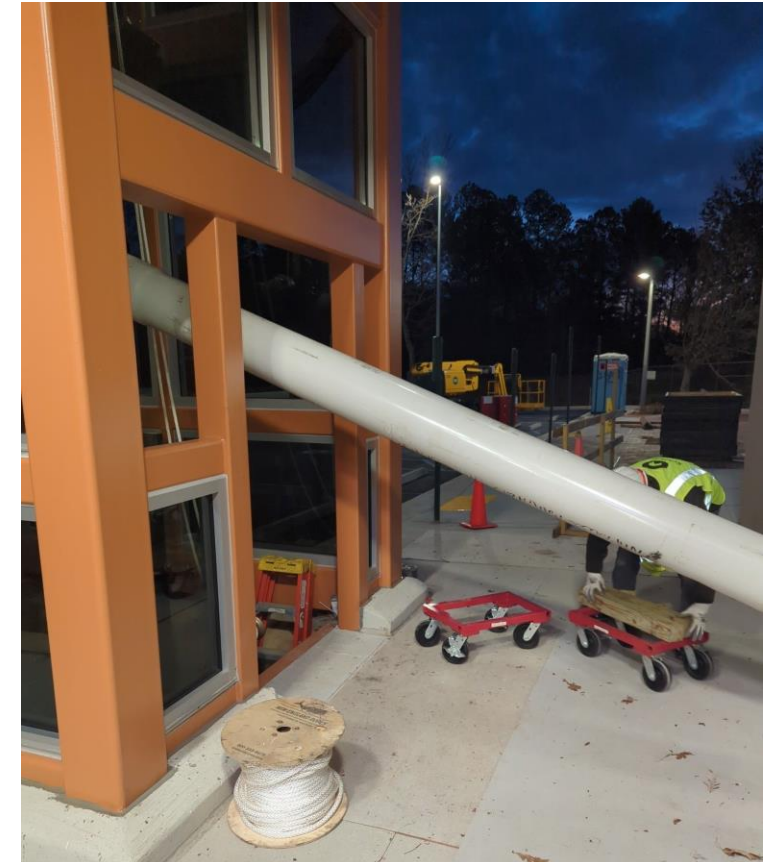
EAST LAKE STATION



ADA parking area



New North pedestrian bridge



North pedestrian bridge installation



Other News

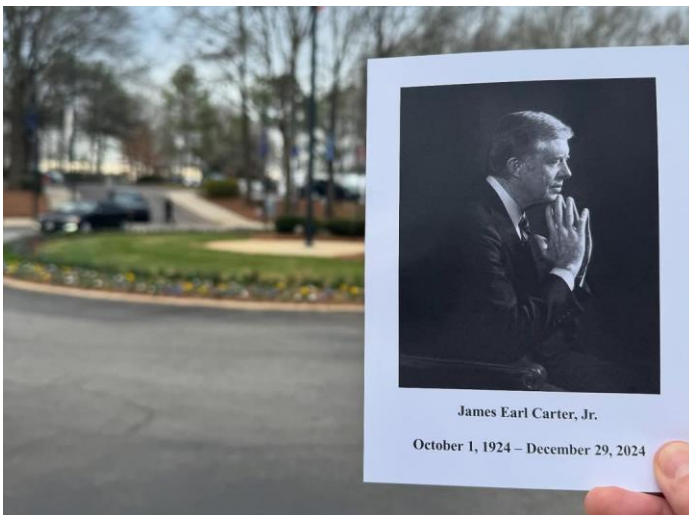
COMMUNITY ENGAGEMENT



CELEBRATING CIVIL RIGHTS HEROES



PROJECT DOVETAIL





Mr. Leroy Ramos
1977 - 2024



Thank You

